

# UltraVet

Quality Affordable Portable Ultrasound  
Quality Affordable Portable Ultrasound



*SEE THE POSSIBILITIES...*

**MOBILSONIC**®

## EXTREME MOBILITY AND FULL CAPABILITY

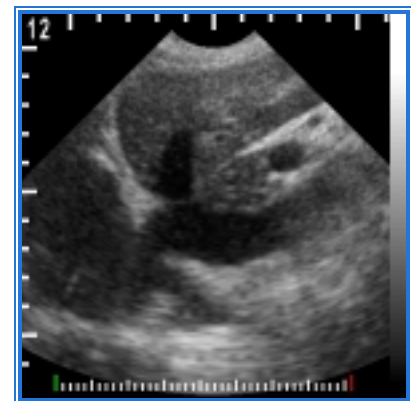
The UltraVet offers complete diagnostic capabilities in an extremely compact, lightweight, and durable design. With its intuitive controls and simple one-handed operation, the VUE 100 is the ultimate combination of ease-of-use and portability.

Possessing excellent image quality and a complete line of transducers, the UltraVet covers a wide range of veterinary applications. It features excellent grayscale imaging and freehand 3D imaging capabilities.

With its ultra-compact design and rugged construction, the UltraVet is designed to withstand harsh operating conditions and comes with a weather-resistant carrying case. Weighing in at only 1.6kg, it's a compact package that can be easily carried anywhere and everywhere.

The UltraVet is a versatile performer, designed for both the field and the office. In the field, the front-pack and waist straps make it not only wearable but also comfortable, so your hands are free to handle the probes, input data and examine the subject. At the office, the UltraVet can be mounted on its custom mobile stand, where it can connect to other peripheral accessories.

Mobilsonic's UltraVet offers the user full diagnostic capability and extreme mobility.



## TRANSDUCERS



TRANSDUCER	FREQ.	APPLICATIONS
<b>4S2</b>	3 MHz	Ribeye/Loin: Bovine or Swine, Chest/Cardiac: Equine, Preg. Check: Sheep or Swine
<b>6S4</b>	5 MHz	Backfat: Bovine or Swine, Average Canine
<b>6IO4</b>	5 MHz	Reproductive: Equine/Bovine
<b>8V6</b>	7 MHz	Vascular Access, Tendons
<b>8PV6</b>	7 MHz	Tendons: Equine
<b>8EC6</b>	7 MHz	Endocavity Probe

# SYSTEM SPECIFICATIONS

## VETERINARY APPLICATIONS

- Ribeye/Loin: Bovine or Swine
- Chest/Cardiac: Equine
- Preg. Check: Sheep or Swine
- Backfat: Bovine or Swine
- Marbling
- Average Canine
- Reproductive: Equine/Bovine
- Vascular Access
- Tendons: Equine

## PHYSICAL CHARACTERISTICS

- Length: 13.7 cm (5.4 in)
- Width: 24.5 cm (9.7 in)
- Height: 6.5 cm (2.6 in)
- Weight: 1.6 kg (3.5 lb)

## SYSTEM FEATURES

- 2D imaging (B-mode)
- 3D imaging capability
- Multi-frequency probes
- Calculation package
- 100 image on-board storage

## USER INTERFACE

- Smart navigation key (pressure sensitive) delivers 360° control of direction and speed
- Select/Freeze button
- Brightness and contrast controls
- Integrated 5.6 in (14.2 cm) TFT color LCD

## DISPLAY MODES

- Live / Freeze / Zoom
- User-defined colors: 4 palettes & 5 gray maps
- 3 save recall modes: "Image", "Loop" or "Cine"

## CINE

- Operates on acoustic frames not video frames
- Play up to 64 frames (Start and Stop pointers)
- Play/Step (move forward or backward frame by frame)

## STANDARD ACCESSORIES

- **6S4** - 5 MHz mechanical sector probe
- External power supply
- Ultrasonic gel
- Operator's manual

## OPTIONAL ACCESSORIES

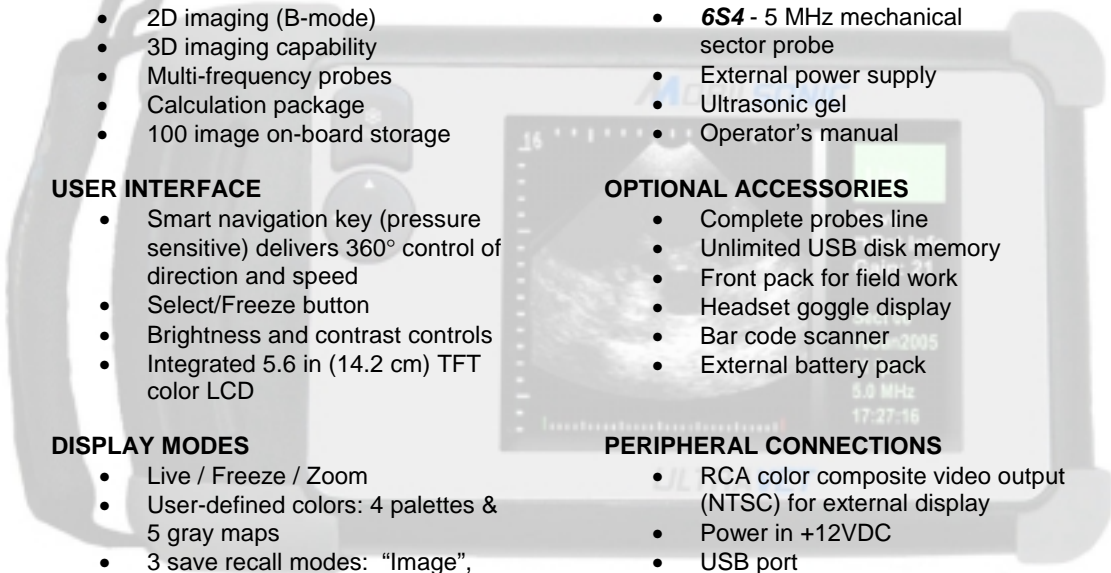
- Complete probes line
- Unlimited USB disk memory
- Front pack for field work
- Headset goggle display
- Bar code scanner
- External battery pack

## PERIPHERAL CONNECTIONS

- RCA color composite video output (NTSC) for external display
- Power in +12VDC
- USB port

## POWER

- Operates 1-2 hours on fully charged new batteries
- Battery: rechargeable nickel metal hydride
- AC: via external power supply



## ***UltraVet***

- Quality portable ultrasound for comprehensive field imaging
- Ultra-compact and lightweight for extreme mobility
- Simple and intuitive controls for ease-of-use
- Complete line of transducers for a wide range of veterinary applications
- PC-based design for quick and easy upgrades
- Complete measurement tools and report packages
- Quick boot up – ready to scan in less than 1 minute
- Battery or AC powered

***MOBILSONIC***®

***SEE THE POSSIBILITIES***

Mobilsonic Inc.  
560 Parrott Street  
San Jose, CA 95112  
USA

Tel (408) 892-4309  
Fax (408) 271-0195  
[www.mobilsonic.com](http://www.mobilsonic.com)